

**Abbotsbury Road  
Morden, SM4 5JX**

**£550,000 Freehold**



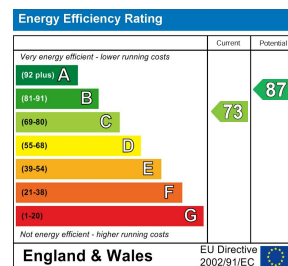
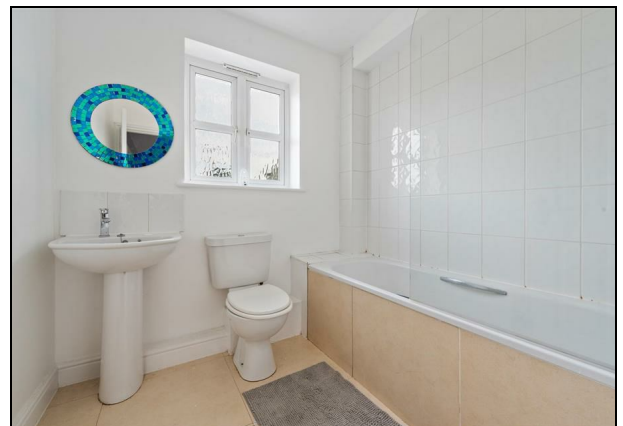
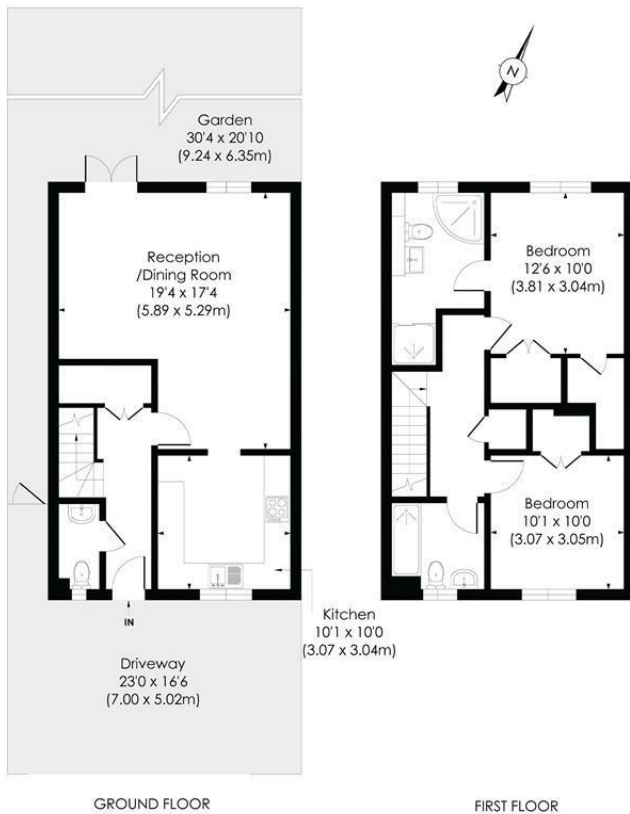
**Well presented two double bedroom semi detached house with off street parking to the front.  
Near to Morden town centre and Northern line tube station. Being sold with the benefit of no  
onward chain. This is a fantastic house for any buyers looking for a home they can move straight  
into.**



## ABBOTSBURY ROAD, SM4

Approx. Gross Internal Floor Area

1040 Sq. ft/96.6 Sq. m



- Semi Detached House
- Two double bedrooms
- Off Street Parking
- No onward chain
- Well presented
- EPC - C

For Free Mortgage Quote and Best Mortgage Rates, call Ellisons Mortgage Advisor on 0208 543 1166



Although these particulars are believed to be correct, their accuracy is not guaranteed and they do not form part of any contract.

Celebrating 30 years of successful Sales and Lettings in Merton

